

Flute 2

Da Capo Christmas Carols

arranged by Kevin Riley

Various

1. As With Gladness

Musical notation for the first carol, 'As With Gladness'. It consists of three staves of music in G major and 4/4 time. The first staff begins with a treble clef, a key signature of one sharp (F#), and a 4/4 time signature. The melody starts with a quarter note G4, followed by eighth notes A4 and B4, then quarter notes C5, B4, A4, and G4. The second staff continues with quarter notes F#4, E4, D4, and C4. The third staff concludes with quarter notes B3, A3, G3, and F#3, ending with a double bar line. A dynamic marking of *mf* is placed below the first staff. Measure numbers 6 and 11 are indicated at the start of the second and third staves, respectively.

2. Away In a manger

Musical notation for the second carol, 'Away In a manger'. It consists of two staves of music in G major and 3/4 time. The first staff begins with a treble clef, a key signature of one sharp (F#), and a 3/4 time signature. The melody starts with a quarter note G4, followed by quarter notes A4 and B4, then quarter notes C5, B4, and A4. The second staff continues with quarter notes G4, F#4, E4, and D4, then quarter notes C4, B3, and A3, ending with a double bar line. A first ending bracket labeled '1.' spans the first two measures of the second staff, and a second ending bracket labeled '2.' spans the last two measures of the second staff. Measure number 6 is indicated at the start of the second staff.

Flute 2

3. Ding Dong Merrily On High

Musical score for 'Ding Dong Merrily On High' in 4/4 time. The score consists of five staves of music. The first staff begins with a treble clef and a 4/4 time signature. The melody features eighth and sixteenth notes with slurs. The second staff starts at measure 6 and includes a repeat sign. The third staff starts at measure 11. The fourth staff starts at measure 14 and includes first and second endings. The piece concludes with a double bar line.

4. Gaudete

Musical score for 'Gaudete' in 4/4 time. The score consists of three staves of music. The first staff begins with a treble clef and a 4/4 time signature, marked with a forte (*f*) dynamic. It features various time signatures (6/8, 2/4, 4/4, 6/8) and includes accents and slurs. The second staff starts at measure 5 and includes a 'Fine' marking and a mezzo-forte (*mf*) dynamic. The third staff starts at measure 9 and includes first and second endings, marked with a forte (*f*) dynamic, and concludes with 'D.C. al Fine'.

Flute 2

5. Good King Wenceslas



6. Hark The Herald Angels Sing



Flute 2

7. Here We Come



8. In Dulci Jubilo



Flute 2

9. Jingle Bells

Musical score for 'Jingle Bells' for Flute 2, measures 1-25. The score is written in treble clef, 2/4 time, and B-flat major. It consists of four staves of music. The first staff contains measures 1-8. The second staff, starting with a measure number '9', contains measures 9-16. The third staff, starting with a measure number '17', contains measures 17-24. The fourth staff, starting with a measure number '25', contains measures 25-32. The piece concludes with a double bar line at the end of the fourth staff.

10. O Come All Ye Faithful

Musical score for 'O Come All Ye Faithful' for Flute 2, measures 1-16. The score is written in treble clef, 4/4 time, and D major. It consists of four staves of music. The first staff contains measures 1-5. The second staff, starting with a measure number '6', contains measures 6-11. The third staff, starting with a measure number '12', contains measures 12-15. The fourth staff, starting with a measure number '16', contains measures 16-21. The piece concludes with a double bar line at the end of the fourth staff.

Flute 2

11. O Jesulein



12. Once In Royal David's City



Flute 2

13. Past 3 O'Clock



Flute 2

14. Riu Riu Riu

$\text{♩} = 100$

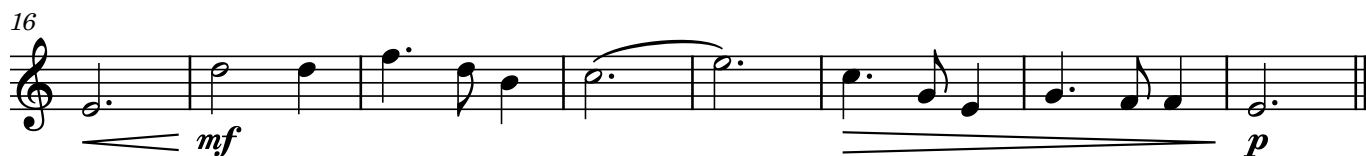


Flute 2

15. See Amid The Winter's Snow



16. Silent Night



Flute 2

17. We Three Kings



18. We Wish You A Merry Christmas

